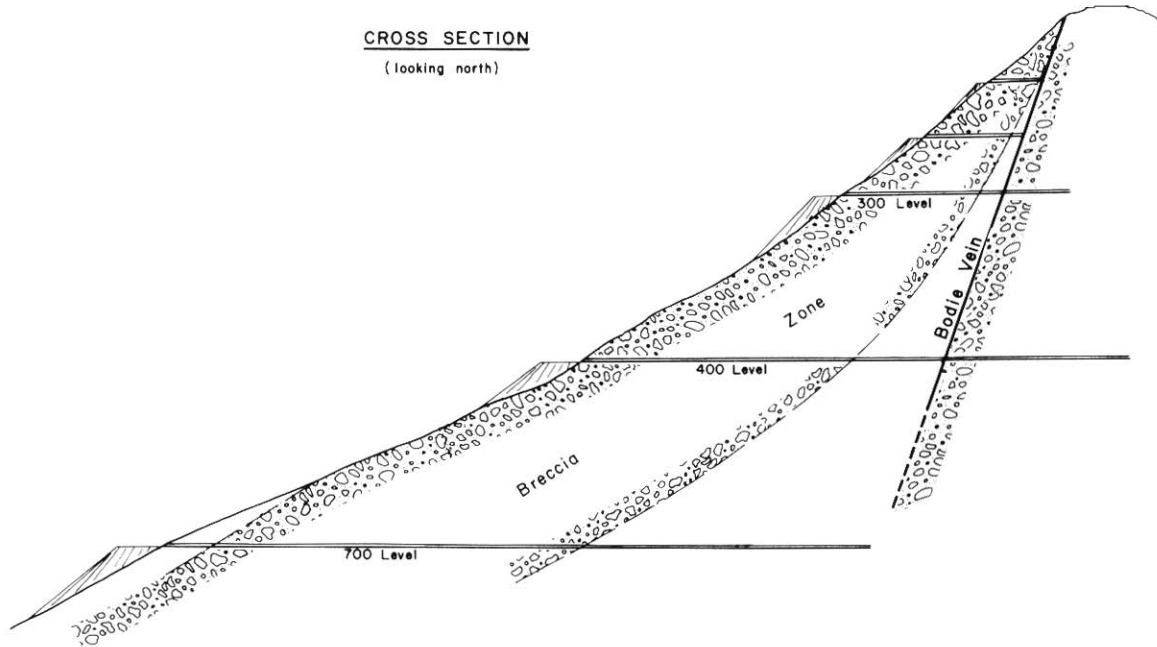
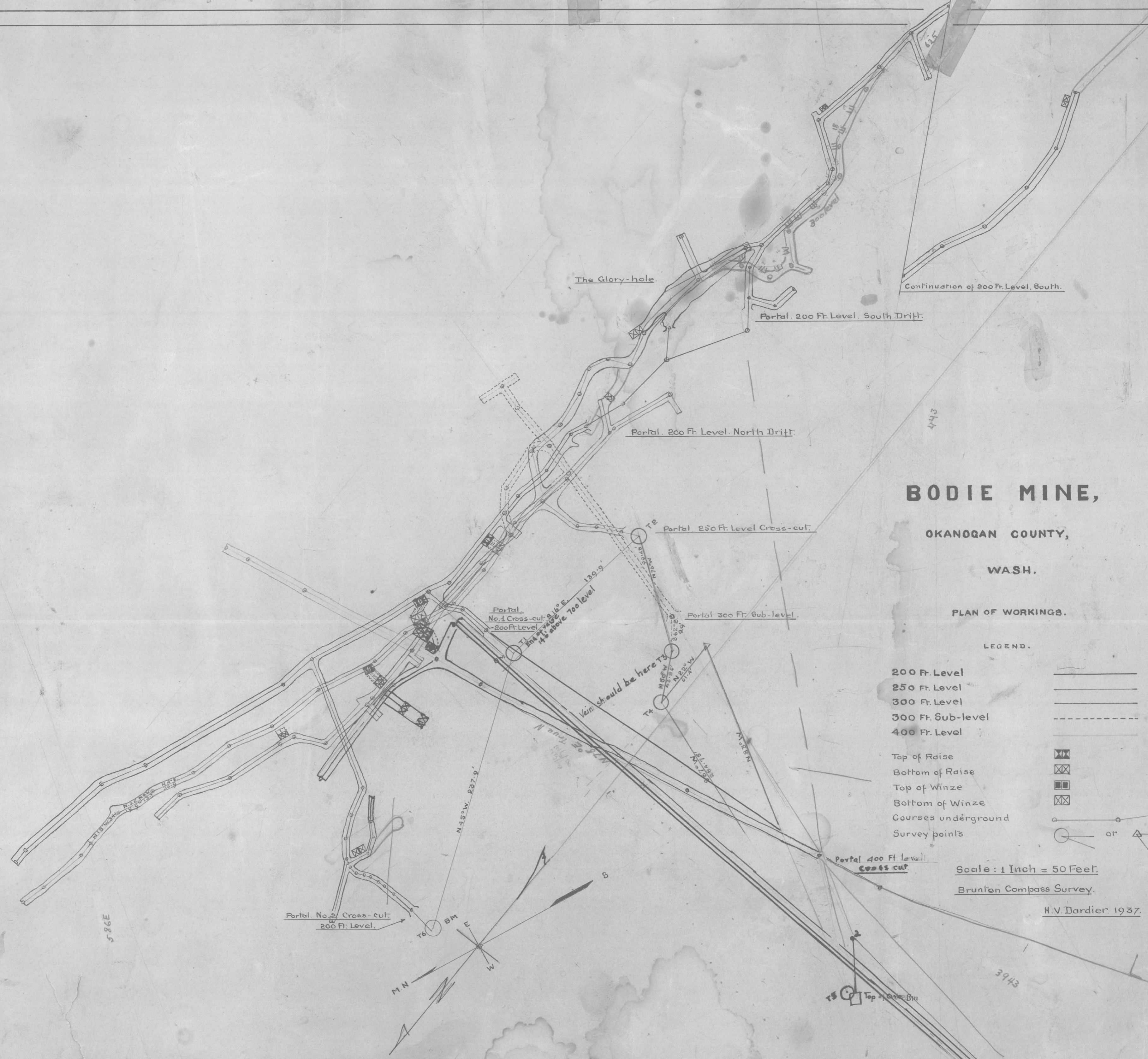


CROSS SECTION

(looking north)





BODIE MINE,
OKANOGAN COUNTY,
WASH.

PLAN OF WORKINGS.

LEGEND.

- 200 Ft. Level
- 250 Ft. Level
- 300 Ft. Level
- 300 Ft. Sub-level
- 400 Ft. Level
- Top of Raise
- Bottom of Raise
- Top of Winze
- Bottom of Winze
- Courses underground
- Survey points or

Scale: 1 Inch = 50 Feet.
 Brunton Compass Survey.

H.V. Dardier 1937.

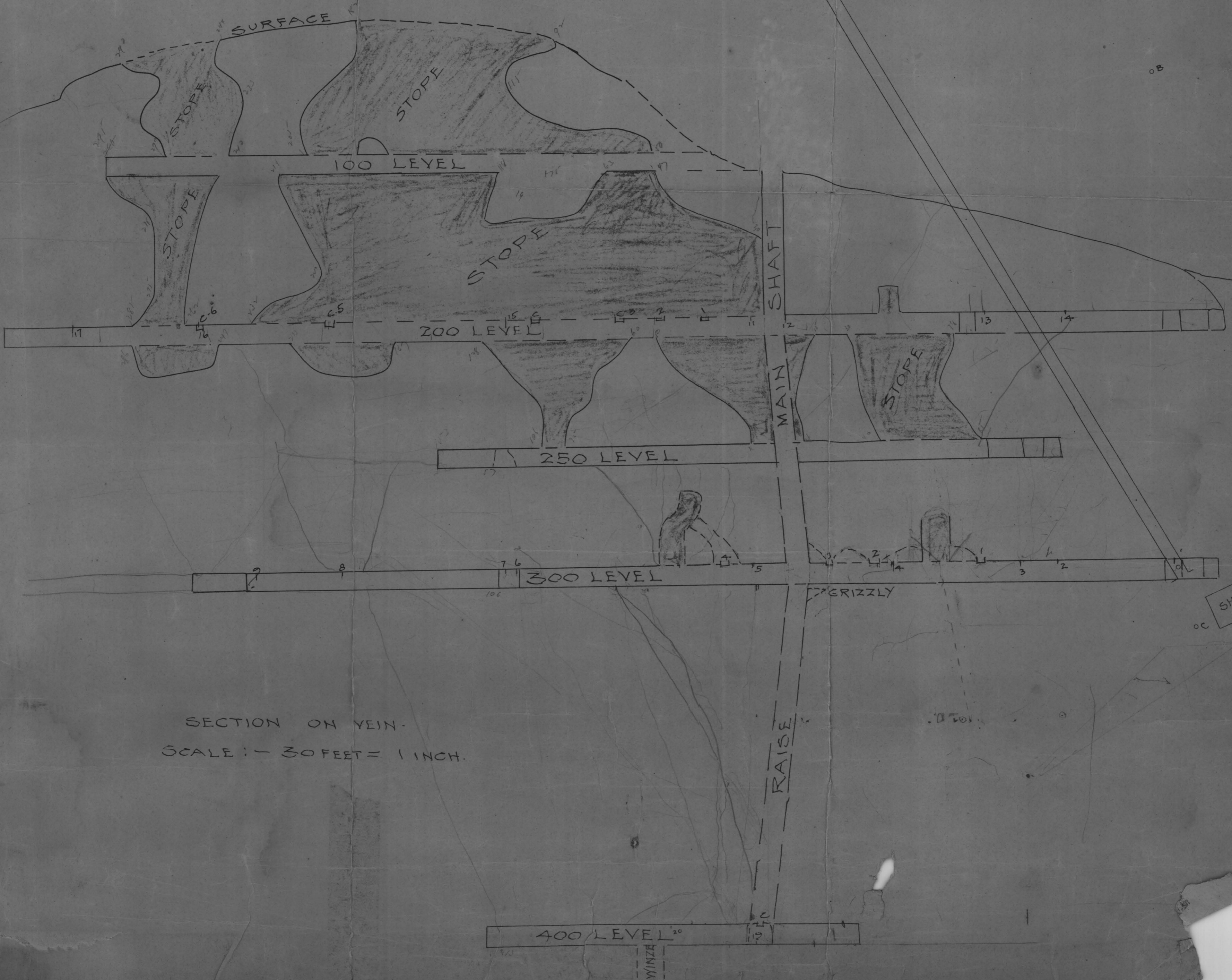
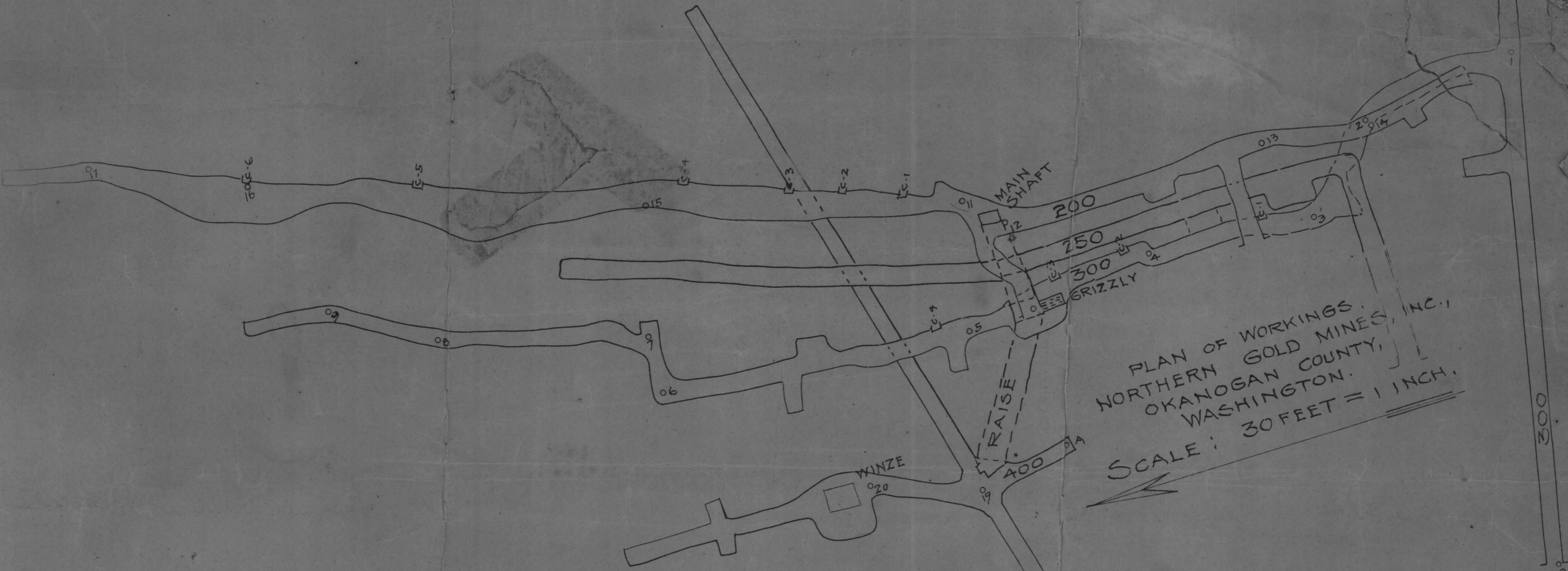
about 10,000 ft of tunnel



Vertical Cross-Section through A-B and X-Y on accompanying plan, with the Cross-Section through X-Y projected in the same plane as that through A-B.

Bodie Mine
Wauconda,
Wash.

conglomerate
Army Engineers Estimate 2,000,000 Tons
At P assay value between 3 + 4 dollars (DEG)



BODIE MINE,

OKANOGAN COUNTY,

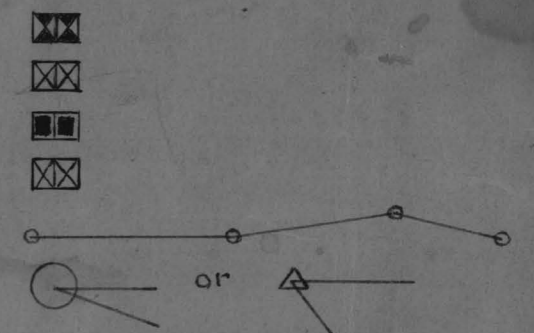
WASH.

PLAN OF WORKINGS.

LEGEND.

- 200 Ft. Level
- 250 Ft. Level
- 300 Ft. Level
- 300 Ft. Sub-level
- 400 Ft. Level

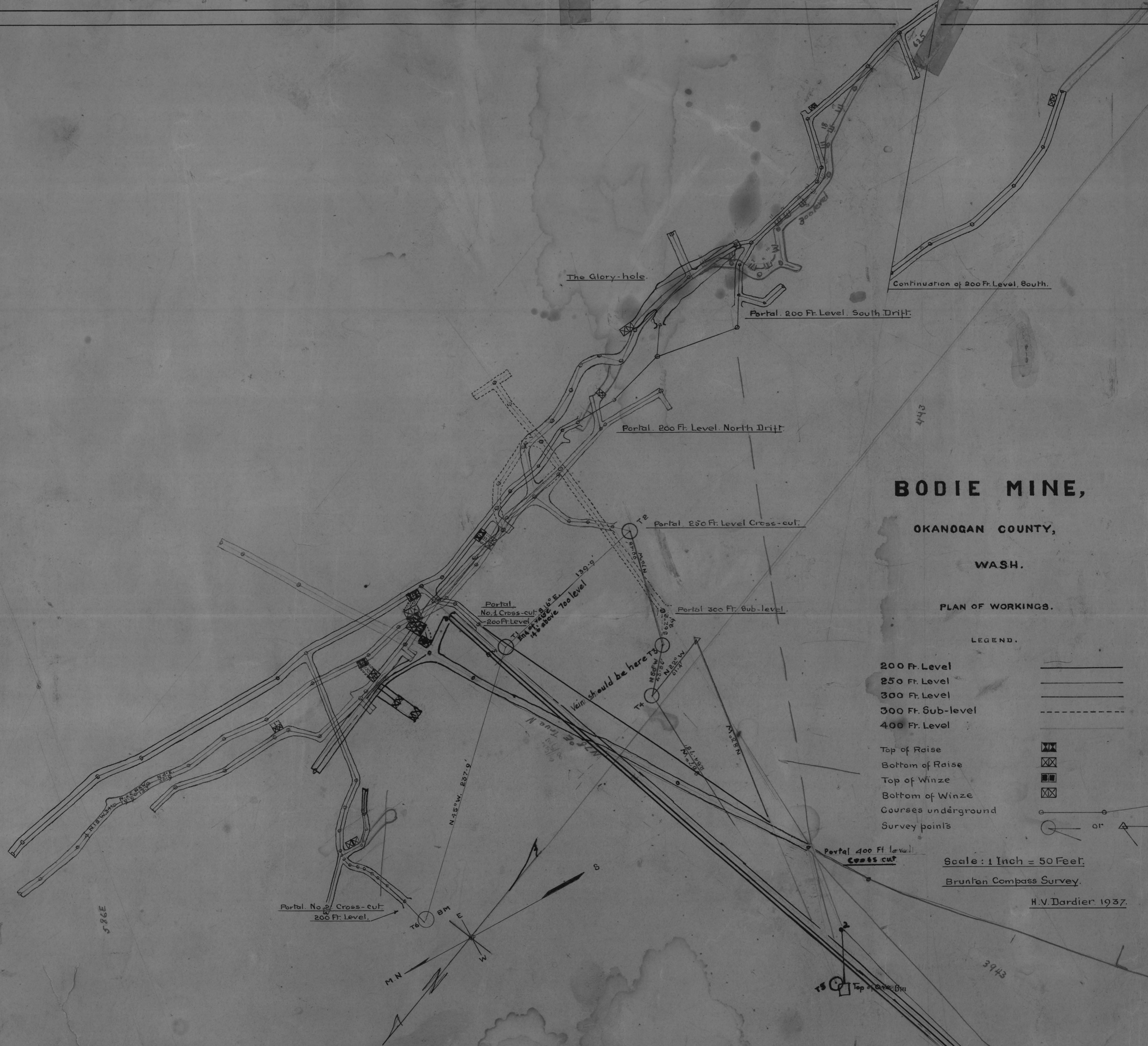
- Top of Raise
- Bottom of Raise
- Top of Winze
- Bottom of Winze
- Courses underground
- Survey points

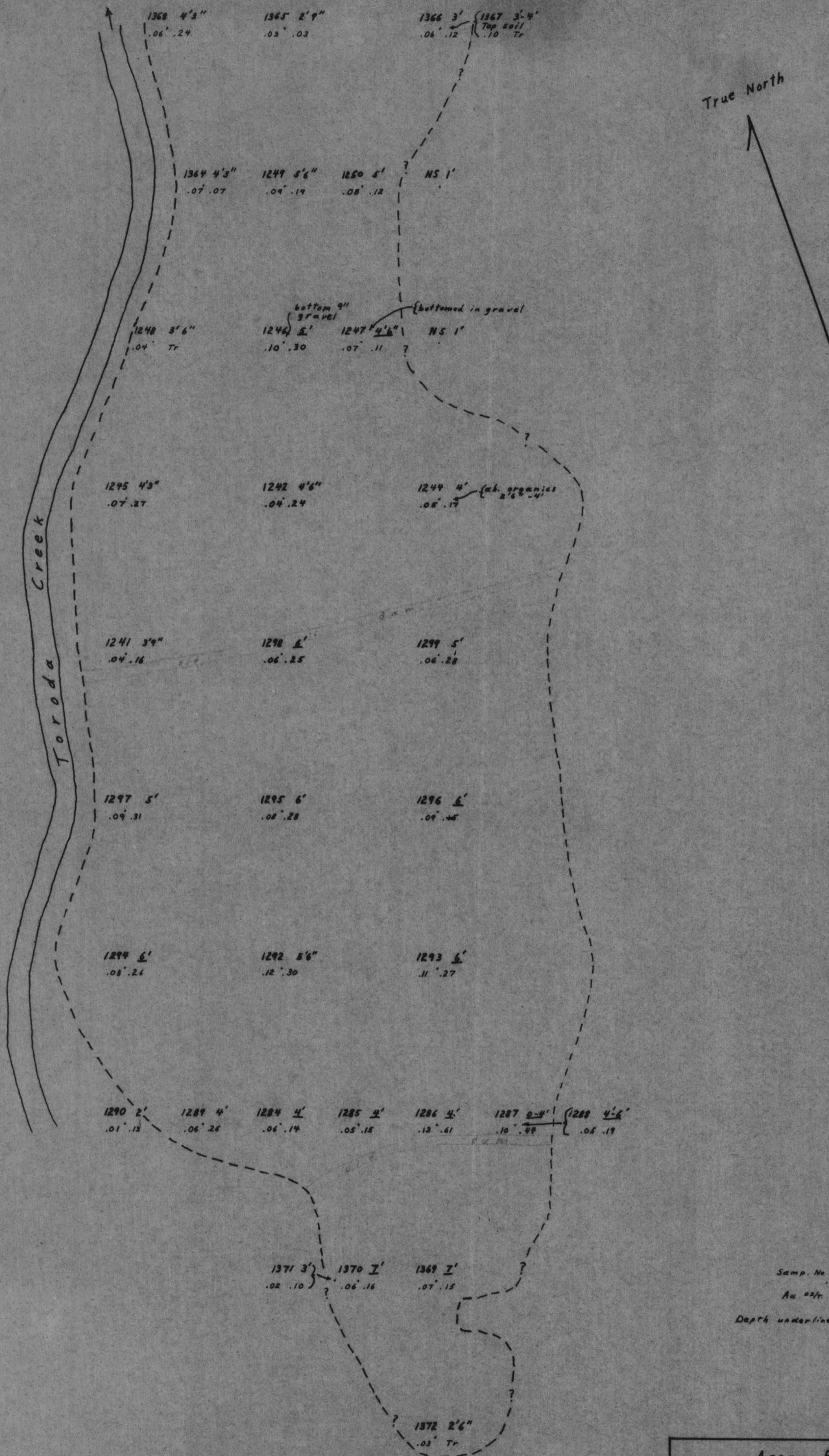


Scale: 1 Inch = 50 Feet.

Brunton Compass Survey.

H.V. Dardier, 1937.





Samp. No. Samp. Depth
 Au oz/ft Ag oz/ft
 Depth underlined = Top soil not reached

**Assay Plan of
 Bodie Mine Tailings Dump
 Okanagan Co., Balout Mining District**

Scale 1" = 50'

By H. H. SHEAR, P. Eng. (B.C.) November, 1975